

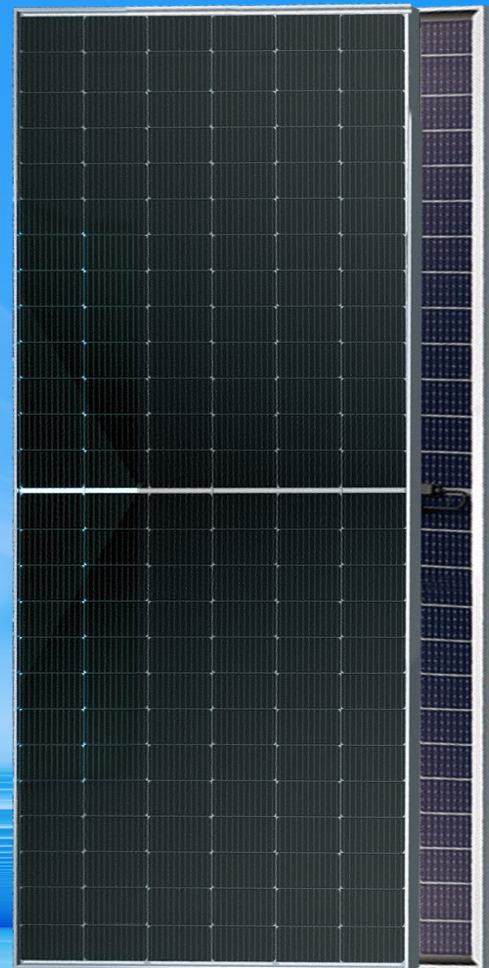


Bifacial Series

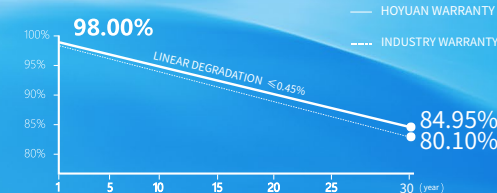


580~595W

HY-P10/78GDF



- Module Efficiency up to 21.3%
- MBB + Half-cell tech, reduce internal current loss, improve module efficiency, minimize micro-crack impacts, and improve module reliability
- Non-destructive Slicing Tech, reduce micro-crack risk
- 70% Bifaciality rate up to 70%, and up to 25% power gain from back side (depending on albedo)
- Resistant to harsh environments
- Anti PID
- More energy yield, lower BOS and LCOE



- 12-YEAR PRODUCT WORKMANSHIP WARRANTY
- 30-YEAR LINEAR POWER WARRANTY



© HOYUAN Solar co., Ltd. all rights reserved.
The product specifications are subject to change without prior notice.
Please use our latest version.

Electrical performance parameters

STC: Irradiance 1000W/m², Cell Temperature 25° C, AM=1.5

Rated output (P _{mpp} / Wp)	580	585	590	595
Rated voltage (V _{mpp} / V)	45.26	45.43	45.60	45.76
Rated current (I _{mpp} / A)	12.82	12.88	12.94	13.00
Open circuit voltage (V _{oc} / V)	53.86	54.06	54.26	54.46
Short-circuit current (I _{sc} / A)	13.58	13.66	13.75	13.83
Module efficiency	20.7%	20.9%	21.1%	21.3%

NMOT: Irradiance 800W/m², Ambient Temperature 20° C, AM=1.5, Wind Speed 1m/s

Rated output (P _{mpp} / Wp)	433.4	437.2	440.9	444.6
Rated voltage (V _{mpp} / V)	42.18	42.34	42.49	42.65
Rated current (I _{mpp} / A)	10.28	10.33	10.38	10.43
Open circuit voltage (V _{oc} / V)	50.90	51.09	51.27	51.46
Short-circuit current (I _{sc} / A)	11.02	11.08	11.15	11.22

Different rear power gains (590W as an example)

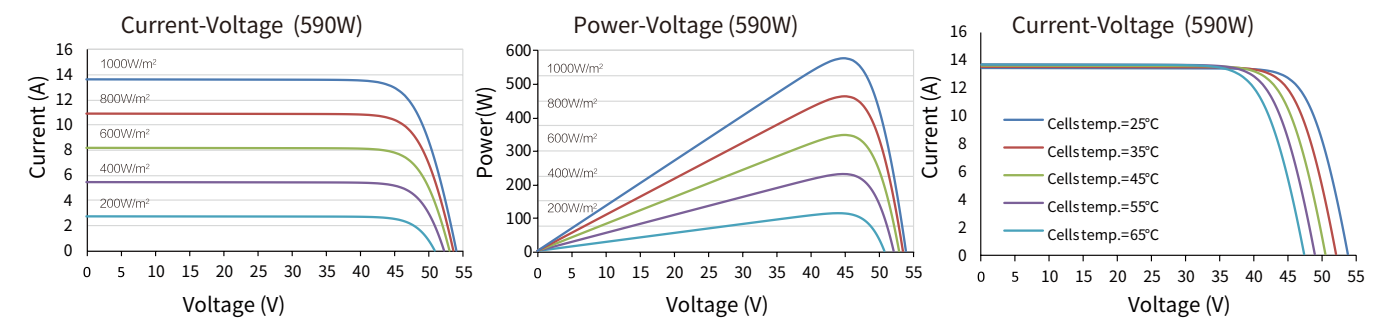
Power gains	P _{mpp} / Wp	V _{mpp} / V	I _{mpp} / A	V _{oc} / V	I _{sc} / A
5%	620	45.60	13.59	54.26	14.43
15%	679	47.29	14.35	56.27	15.24
25%	738	48.97	15.06	58.28	16.00

Temperature coefficient

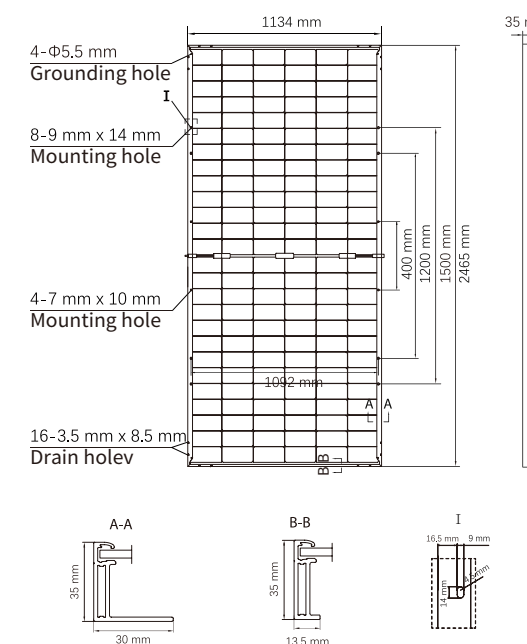
Temperature coefficient (P _{mpp})	-0.34%/°C
Temperature coefficient (I _{sc})	+0.05%/°C
Temperature coefficient (V _{oc})	-0.26%/°C
Nominal module operating temperature (NMOT)	42±2°C

Operating parameters

Max. system voltage (IEC/UL)	1500V _{DC}
Number of diodes	3
Junction box protection rating	IP 68
Max. series fuse rating	30 A



Mechanical parameters



Outer dimensions (L x W x H)	2465 x 1134 x 35 mm
Cell	P type mono-crystalline
Number of cells	156 (6*26)
Frame type	Aluminum, silver anodized
Glass thickness	2.0+2.0 mm
Cable length (including connector)	Portrait: (+)350 mm, (-)250 mm ; Customized length
Cable cross-sectional area (IEC/UL)	4 mm ² / 12 AWG
① Maximum test mechanical load	5400Pa (front) / 2400Pa (rear)
Connector type (IEC/UL)	MC4 (compatible) / MC4 original (optional)
Module weight	34.7 kg
Packaging unit	31 pcs / box (Subject to sales contract)
Weight of packing unit	1129kg / box
Modules per 40' HQ container	496 pcs

① Please refer to the installation manual or contact us to confirm.
The maximum test mechanical load = 1.5 × maximum design mechanical load.